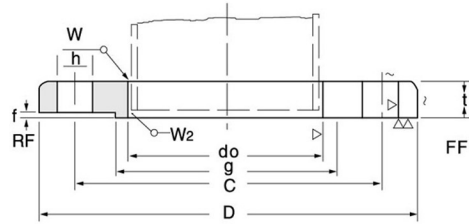


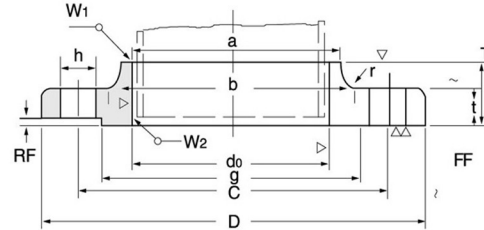
5 K

**KS B1503
JIS B2220**

NOMINAL SIZE 10-400mm



NOMINAL SIZE 450-1000mm



Unit:mm

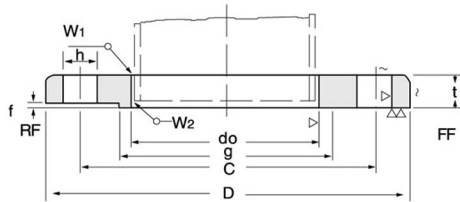
Nominal Bore of Flange	Outside Dia. of Appli- Cable Pipe	Inside Dia. of Flange do	Outside Dia. of Flange D	Sectional Dimensions of Flange						Dia. of Bolt			Nominal Bolt Size	Welding		Weight (kg)	
				t	T	Dia. of Hub		Radi- us r	Raised Face f	Dia. of Raised Face g	Dia. of Bolt Circle C	Num- ber of Bolt Holes		Hole Dia. h	W1		W2
						a	b										
(10)	17.3	17.8	75	9	-	-	-	-	1	39	55	4	12	M10	5	2.5	0.27
15	21.7	22.2	80	9	-	-	-	-	1	44	60	4	12	M10	5	3	0.30
(20)	27.2	27.7	85	10	-	-	-	-	1	49	65	4	12	M10	5	3	0.37
25	34.0	34.5	95	10	-	-	-	-	1	59	75	4	12	M10	5	3	0.45
(32)	42.7	43.2	115	12	-	-	-	-	2	70	90	4	15	M12	6	3	0.78
40	48.6	49.1	120	12	-	-	-	-	2	75	95	4	15	M12	6	3	0.83
50	60.5	61.1	130	14	-	-	-	-	2	85	105	4	15	M12	6	3	1.07
65	76.3	77.1	155	14	-	-	-	-	2	110	130	4	15	M12	6	4	1.49
80	89.1	90.0	180	14	-	-	-	-	2	121	145	4	19	M16	6	4	1.99
(90)	101.6	102.6	190	14	-	-	-	-	2	131	155	4	19	M16	6	4	2.09
100	114.3	115.4	200	16	-	-	-	-	2	141	165	8	19	M16	7	4	2.39
125	139.8	141.2	235	16	-	-	-	-	2	176	200	8	19	M16	7	4	3.23
150	165.2	166.6	265	18	-	-	-	-	2	206	230	8	19	M16	7	5	4.41
(175)	190.7	192.1	300	18	-	-	-	-	2	232	260	8	23	M20	7.5	5	5.51
200	216.3	218.0	320	20	-	-	-	-	2	252	280	8	23	M20	8.5	6	6.33
(225)	241.8	243.7	345	20	-	-	-	-	2	277	305	12	23	M20	9	6	6.64
250	267.4	269.5	385	22	-	-	-	-	2	317	345	12	23	M20	10	6	9.45
300	318.5	321.0	430	22	-	-	-	-	3	360	390	12	23	M20	10	7	10.30
350	355.6	358.1	480	24	-	-	-	-	3	403	435	12	25	M22	12	7	14.00
400	406.4	409.0	540	24	-	-	-	-	3	463	495	16	25	M22	12	7	16.90
450	457.2	460.0	605	24	40	495	500	5	3	523	555	16	25	M22	12	7	24.80
500	508.0	511.0	655	24	40	546	552	5	3	573	605	20	25	M22	12	7	26.90
550	558.8	562.0	720	26	42	597	603	5	3	630	665	20	27	M24	12	7	34.10
600	609.6	613.0	770	26	44	648	654	5	3	680	715	20	27	M24	12	7	37.50
650	66.4	664.0	825	26	48	702	708	5	3	735	770	24	27	M24	12	7	42.80
700	711.2	715.0	875	26	48	751	758	5	3	785	820	24	27	M24	12	7	45.40
750	762.0	766.0	945	28	52	802	810	5	3	840	880	24	33	M30	12	7	57.40
800	812.8	817.0	995	28	52	854	862	5	3	890	930	24	33	M30	13	8	60.80
850	863.6	868.0	1045	28	54	904	912	5	3	940	980	24	33	M30	13	8	63.50
900	914.4	919.0	1095	30	56	956	964	5	3	990	1030	24	33	M30	13	8	75.30
1000	1016.0	1021.0	1195	32	60	1058	1066	5	3	1090	1130	28	33	M30	14	9	88.50
★(1100)	1117.6	1123	1305	32	-	-	-	-	3	1200	1240	28	33	M30			
★1200	1219.2	1225	1420	34	-	-	-	-	3	1305	1350	32	33	M30			
★ 1350	1371.6	-	1575	34	-	-	-	-	3	1460	1505	32	33	M30			
★ 1500	1524.0	-	1730	36	-	-	-	-	3	1615	1660	36	33	M30			

1. Flanges of parenthesized nominal diameter had letter not be used.
2. The facing of flanges shall conform to KS b1519(JIS B2202)1984.
3. Nominal diameter over 1000is manufacturer' s standard(★).

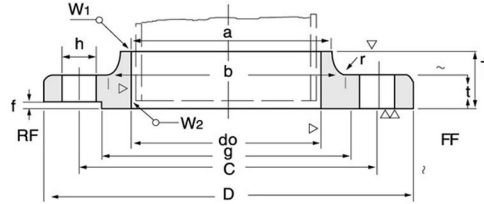
10K

KS B1503 JIS B2220

NOMINAL SIZE 10-225mm



NOMINAL SIZE 250-1000mm



Unit:mm

Nominal Bore of Flange	Outside Dia. of Steel Pipe	Inside Dia. of Flange do	Outside Dia. of Flange D	Sectional Dimensions of Flange						Dia. of Bolt			Nominal Bolt Size	Weld Length (Reference)		Approx. Weight (kg/w)	
				t	T	Dia. of Hub		Radi- us r	Raised Face f	Dia. of Raised Face g	Dia. of Circle Dia. C	Num- ber of Bolt Holes		Hole Dia. h	W1		W2
						a	b										
10	17.3	17.8	90	12	-	-	-	-	1	46	65	4	15	M12	5	2.5	0.52
15	21.7	22.2	95	12	-	-	-	-	1	51	70	4	15	M12	5	3	0.57
20	27.2	27.7	100	14	-	-	-	-	1	56	75	4	15	M12	5	3	0.73
25	34	34.5	125	14	-	-	-	-	1	67	90	4	19	M16	5	3	1.13
32	42.7	43.2	135	16	-	-	-	-	2	76	100	4	19	M16	6	3	1.48
40	48.6	49.1	140	16	-	-	-	-	2	81	105	4	19	M16	6	3	1.56
50	60.5	61.1	155	16	-	-	-	-	2	96	120	4	19	M16	6	3	1.88
65	76.3	77.1	175	18	-	-	-	-	2	116	140	4	19	M16	6.5	4	2.6
80	89.1	90	185	18	-	-	-	-	2	126	150	8	19	M16	6.5	4	2.61
(90)	101.6	102.6	195	18	-	-	-	-	2	136	160	8	19	M16	6.5	4	2.76
100	114.3	115.4	210	18	-	-	-	-	2	151	175	8	19	M16	7	4	3.14
125	139.8	141.2	250	20	-	-	-	-	2	182	210	8	23	M20	7.5	4	4.77
150	165.2	166.6	280	22	-	-	-	-	2	212	240	8	23	M20	8	5	6.34
(105)	190.7	192.1	305	22	-	-	-	-	2	237	265	12	23	M20	9	5	6.82
200	216.3	218	330	22	-	-	-	-	2	262	290	12	23	M20	9	6	7.53
(225)	241.8	243.7	350	22	-	-	-	-	2	282	310	12	23	M20	9	6	7.74
250	267.4	269.5	400	24	36	288	292	6	2	324	355	12	25	M22	10	6	12.7
300	318.5	321	445	24	38	340	346	6	3	368	400	16	25	M22	10	6	13.8
350	355.6	358.1	490	26	42	380	386	6	3	413	445	16	25	M22	12	7	18.2
400	406.4	409.0	560	28	44	436	442	6	3	475	510	16	27	M24	12	7	25.2
450	457.2	460.0	620	30	48	496	502	6	3	530	565	20	27	M24	14	8	33
500	508.0	511.0	675	30	48	548	554	6	3	585	620	20	27	M24	14	8	37.6
(550)	558.8	562.0	745	32	52	604	610	6	3	640	680	20	33	M30	15	9	49.7
600	609.6	613.0	795	32	52	656	662	6	3	690	730	24	33	M30	16	10	52.6
650	660.4	664	845	34	56	706	712	6	3	740	780	24	33	M30	16	10	60.6
700	711.2	715	905	34	58	762	770	6	3	800	840	24	33	M30	17	10	70.6
750	762.0	766	970	36	62	816	824	6	3	855	900	24	33	M30	18	11	85.8
800	812.8	817	1020	36	64	868	876	6	3	905	950	28	33	M30	19	12	91.2
(850)	863.6	868	1070	36	66	920	928	6	3	955	1000	28	33	M30			
900	914.4	919	1120	38	70	971	979	6	3	1005	1050	28	33	M30	19	12	98.6
1000	1016	1021	1235	40	74	1073	1081	6	3	1110	1160	28	39	M36	22	14	109
★(1100)	1117.6	1123	1345	42	76	-	-	-	3	1220	1270	28	39	M36	22	14	133
★1200	1219.2	1225	1465	44	78	-	-	-	3	1325	1380	32	39	M36			
★1350	1371.6	-	1630	48	82	-	-	-	3	1480	1540	36	45	M42			
★1500	1524.0	-	1795	50	90	-	-	-	3	1635	1700	40	45	M42			

- Flanges of parenthesized nominal diameter had letter not be used.
- The facing of flanges shall conform to KS b1519(JIS B2202)1984.
- Nominal diameter over 1000is manufacturer' s standard(★).